

FOR IMMEDIATE RELEASE

Segmented Project Planner Supports Tracing! SPP version 3.0

Arroyo Grande, CA – June 30, 2010 –SegmentedTurning.com announces another set of improvements in its newest release of its software design tool for segmented wood turners.

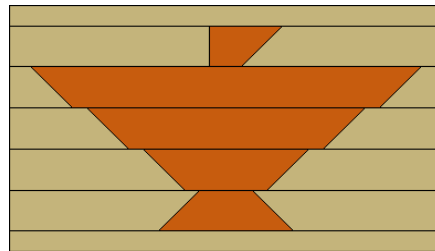
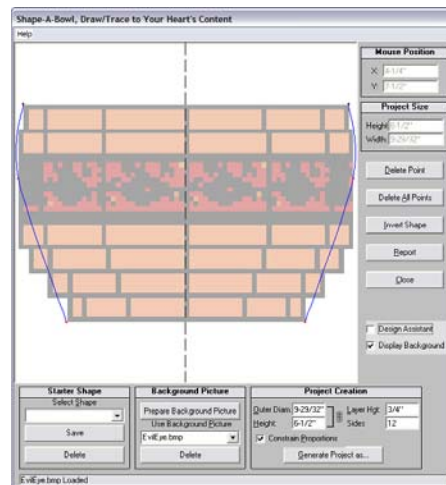


Specifically included are:

- Shape-A-Bowl which extends the functionality of Sketch-A-Bowl to include tracing from pictures/drawings of objects.
- Overhauled and expanded Help system with help access from nearly every form/dialog.
- A few small error fixes.

In the works:

- Plug-In environment created to make new, separately created, complex segment “designers” available in the future. A “designer” is a tool for creating complex segments such as diamonds or zigzags. Interested parties are invited to create additional plug-ins. Contact Bill Kandler for interface details.



According to Bill Kandler, creator of the software and an accomplished segmented turner, “These changes kick up the design functionality of the Segmented Project Planner another notch, making it even easier for a user to create successful project shapes.”

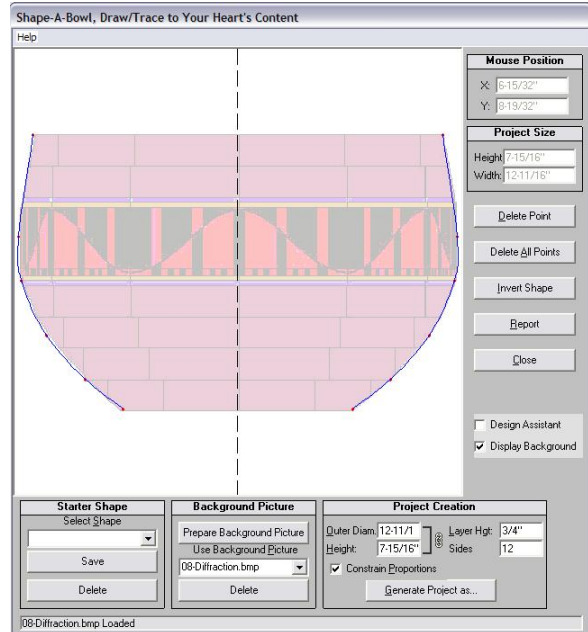
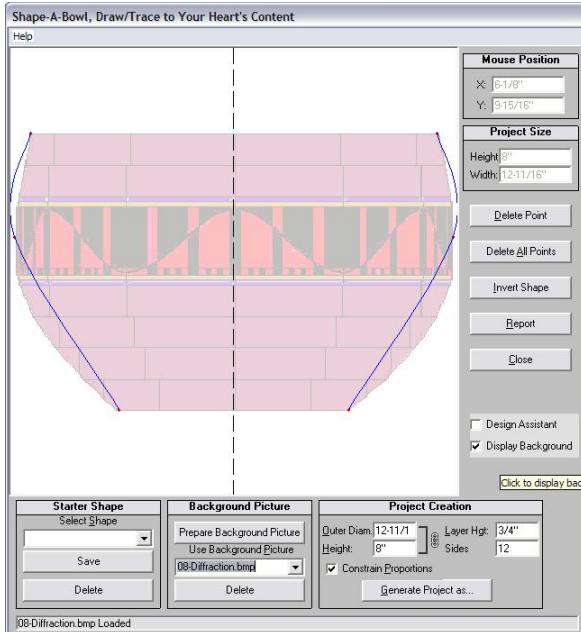
As always, this new release is free to existing program customers via a download from our web site (<http://www.segmentedturning.com/upgrdspp.exe>) and pricing remains at \$39.95 for the installation CD.

Contact: Bill Kandler
Telephone: (805) 489-5309
Email: bkandler@segmentedturning.com
Website: www.segmentedturning.com

Shape-A-Bowl

From Picture to Project Plan; Less than 5 Minutes

These three pictures tell the story. In #1, I've just loaded up a picture I want to trace. The program has already presented me with a rough approximation of the shape. In #2, I've added 3 points to the initial shape to make it agree with my picture. Then it's just three more clicks, and in #3 I see the initial project plan.



This screenshot shows the 'Segmented Project Planner' software. It features a detailed table of project parameters and a graphical representation of the bowl's segmented structure.

Lyr	Sides	Layer Height	Outer Diameter	Wall Thickness	Side Incline	Stagger	Material Thickness	Miter Angle	Blade Tilt	Edge Length	Board Length	Board Width	GlueUp Diameter	Board Foot Cost	Ring Cost
1	12	3/4"	12-1/8"	3/8"			3/4"	15.000°		3-5/16"	39-1/32"	27/32"	12-13/16"	\$2.70	\$0.62
2	12	3/4"	12-11/32"	3/8"			3/4"	15.000°		3-3/8"	39-25/32"	27/32"	13-1/32"	\$2.70	\$0.63
3	12	3/4"	12-9/16"	3/8"			3/4"	15.000°		3-7/16"	40-17/32"	27/32"	13-9/32"	\$2.70	\$0.64
4	12	3/4"	12-23/32"	11/32"			3/4"	15.000°		3-15/32"	41-1/16"	13/16"	13-7/16"	\$2.70	\$0.63
5	12	3/4"	12-3/4"	9/32"			3/4"	15.000°		3-1/2"	41-7/16"	3/4"	13-15/32"	\$2.70	\$0.58
6	12	3/4"	12-3/4"	15/32"			3/4"	15.000°		3-1/2"	40-31/32"	15/16"	13-15/32"	\$2.70	\$0.72
7	12	3/4"	12-11/32"	19/32"			3/4"	15.000°		3-3/8"	39-5/32"	1-1/16"	13-1/32"	\$2.70	\$0.78
8	12	3/4"	11-23/32"	3/4"			3/4"	15.000°		3-7/32"	36-5/32"	1-7/32"	12-13/32"	\$2.70	\$0.84
9	12	3/4"	10-25/32"	2-1/64"			3/4"	15.000°		2-31/32"	30-11/16"	2-15/32"	11-7/16"	\$2.70	\$1.42
10	12	3/4"	9-7/16"	4-1/4"			3/4"	15.000°		2-19/32"	20-9/16"	4-21/32"	10-1/32"	\$2.70	\$1.80

The software interface includes a 'New Project Name' field, 'Saw Width: 1/8"', 'Cutting Accuracy: 1/32"', and 'Glue-Up Tolerance: 1/8"'. The 'Cutting Mode' is set to 'Economy'. Below the table, there are options for 'Display Type' (Project Outline, Project Detail, Current Ring, Local Rings) and a graphical view of the bowl's segmented structure. The bottom status bar shows 'Proj. Hgt.: 7-1/2"', 'Proj. Cost: \$8.66', 'Min. Wall: 1/4"', and 'Min. Lyr.: 3'.

6/30/2010